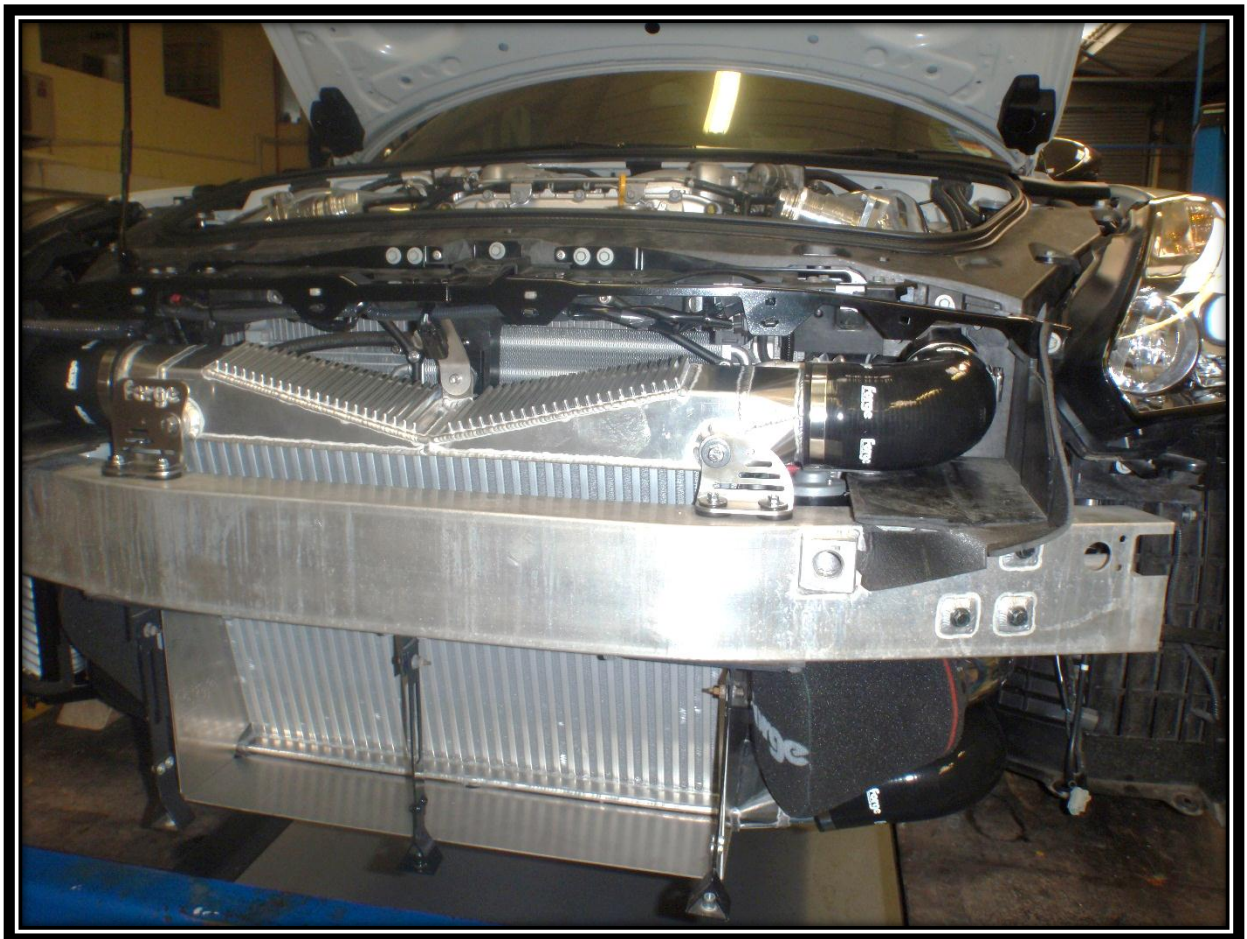




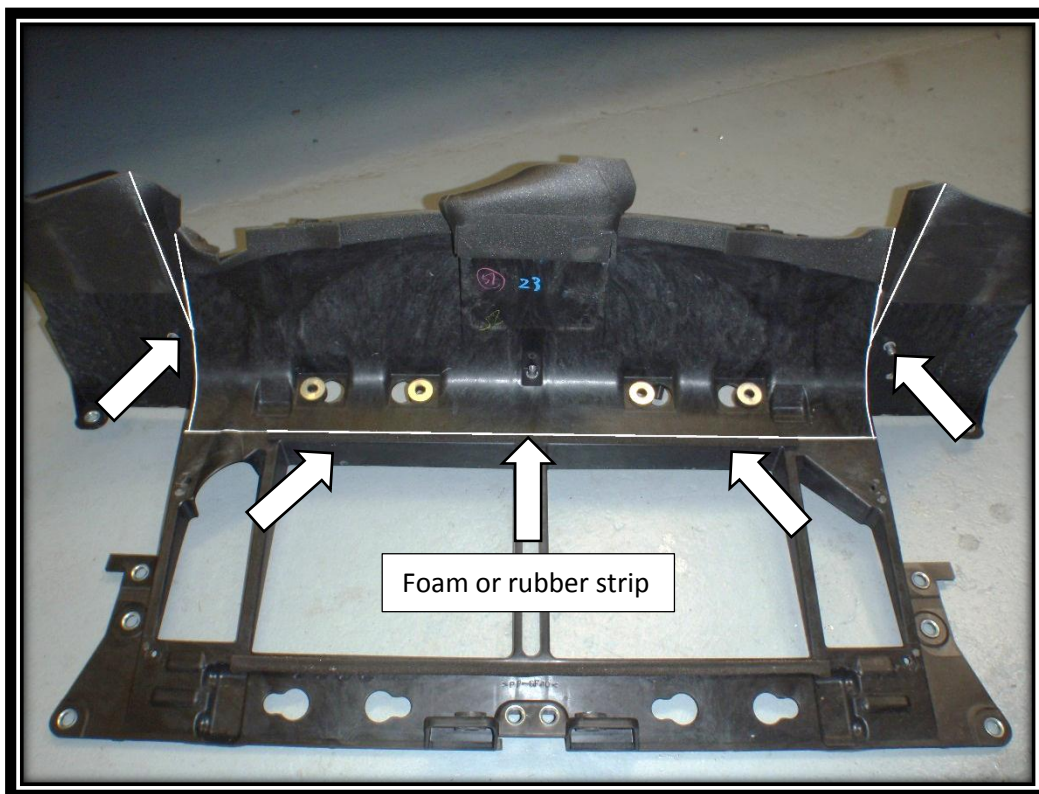
Nissan GTR R35 Intercooler Fitting Instructions



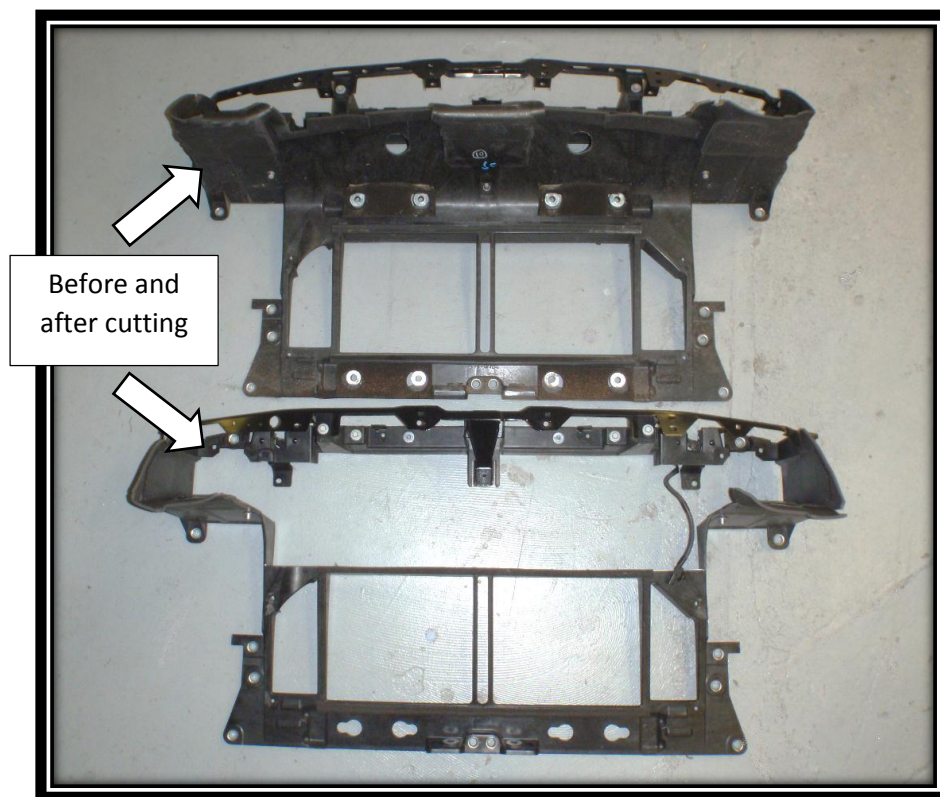
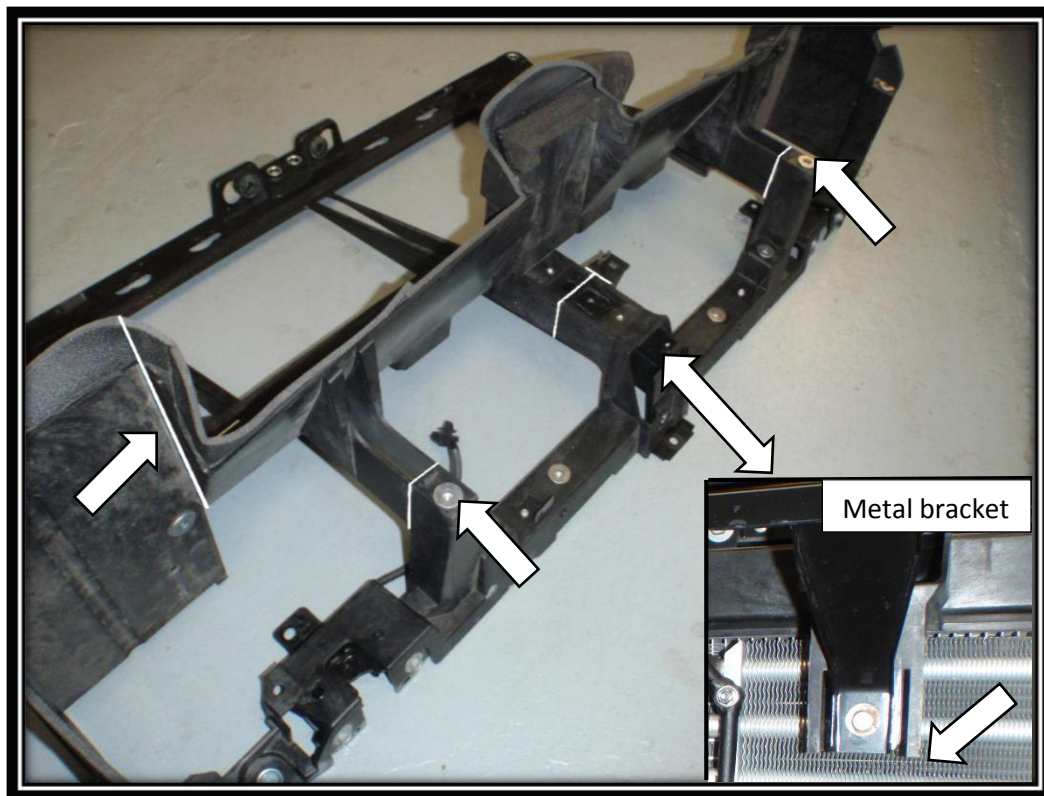
1. Remove the front of your vehicle plus all the intakes and boost pipes. Please refer to the forge motorsport strip down instructions if you have not done this before.



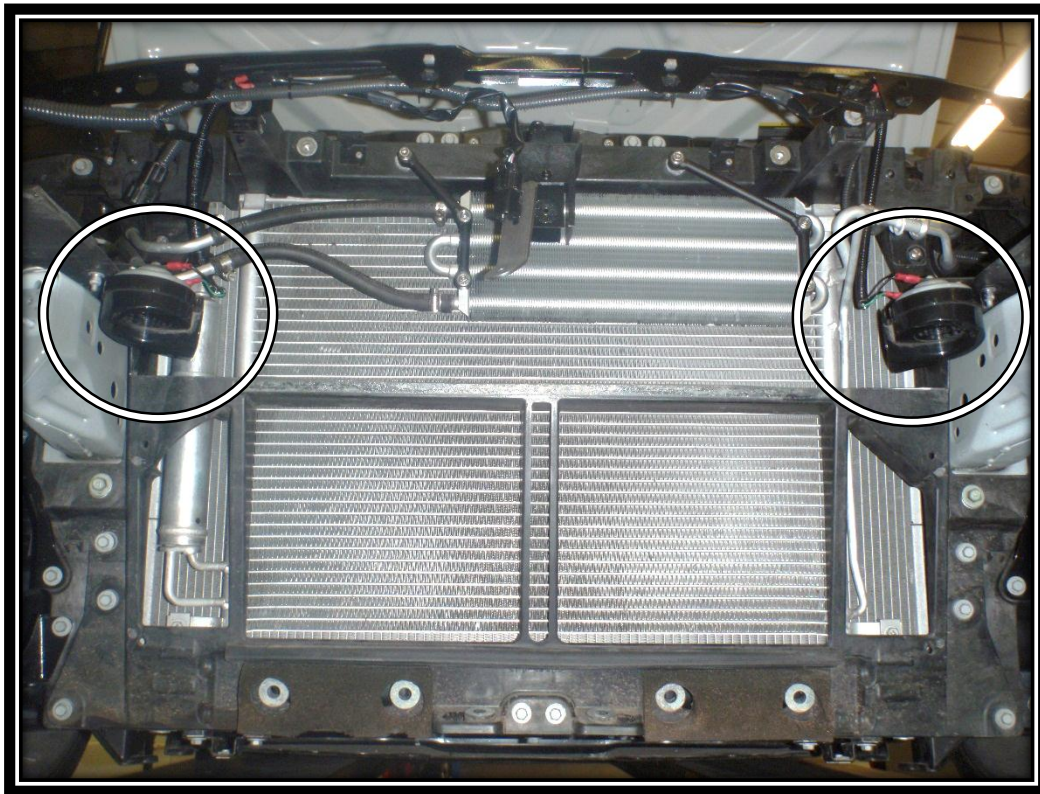
2. Mark out the radiator pack/ducting just above the foam or rubber strip, as shown below.



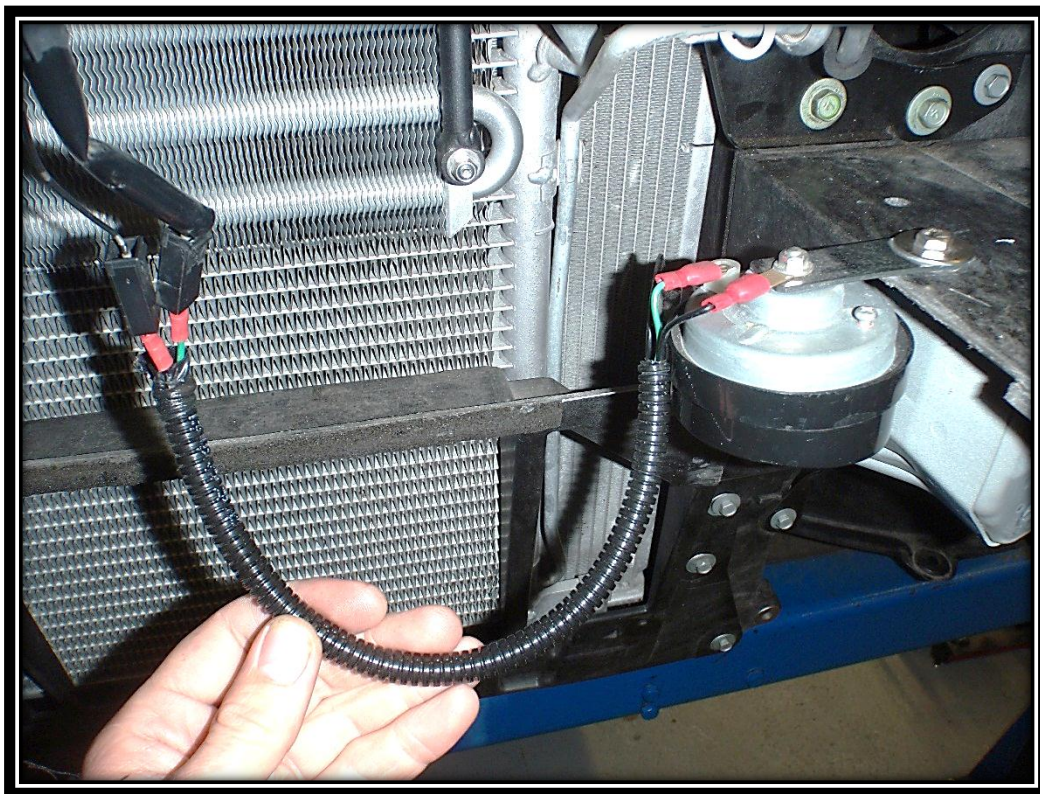
3. Mark the cutting line on the middle support at the bottom of the metal bracket. The two side supports need to be cut flush at the bottom.



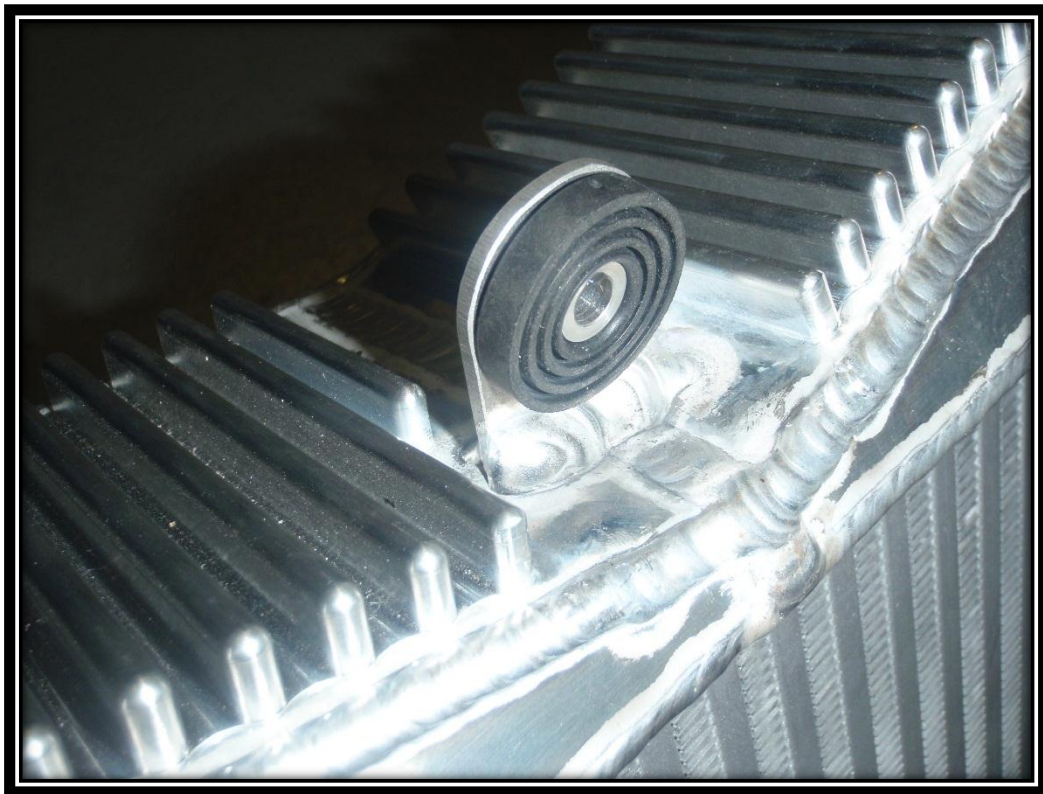
4. Refit the radiator pack/ducting to front of the vehicle with the horns in the new position.



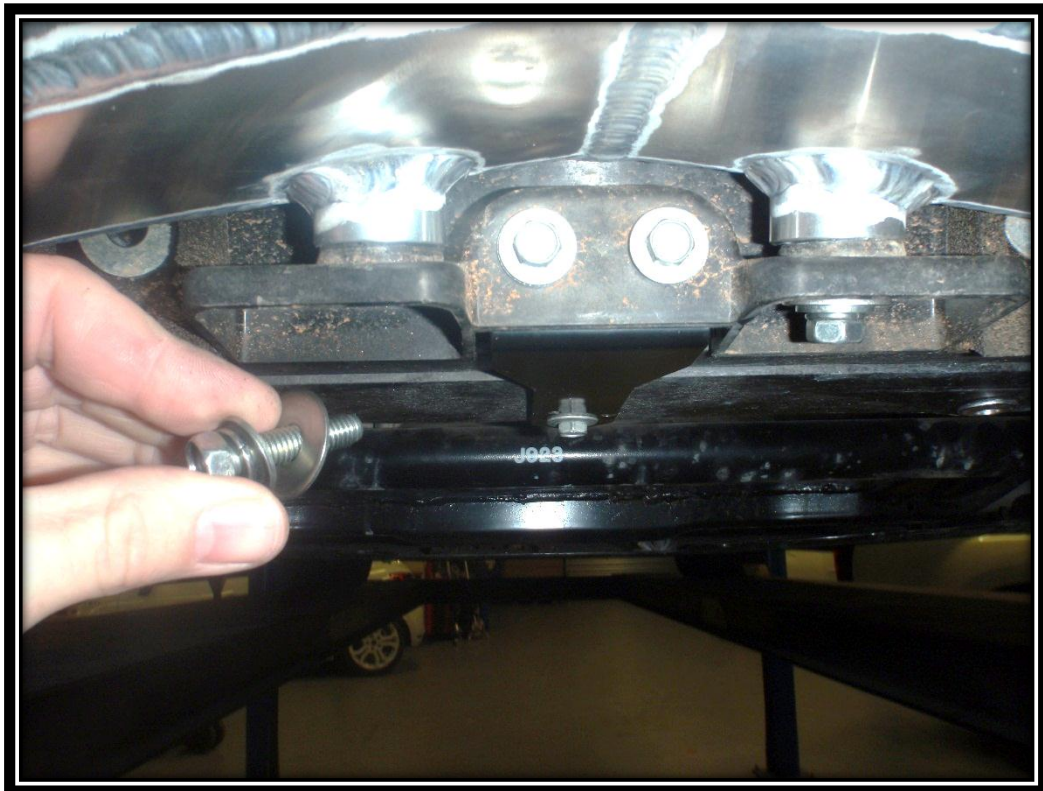
5. Plug in horn wiring extensions and bolt the horn where the metal intake shield would have fitted.



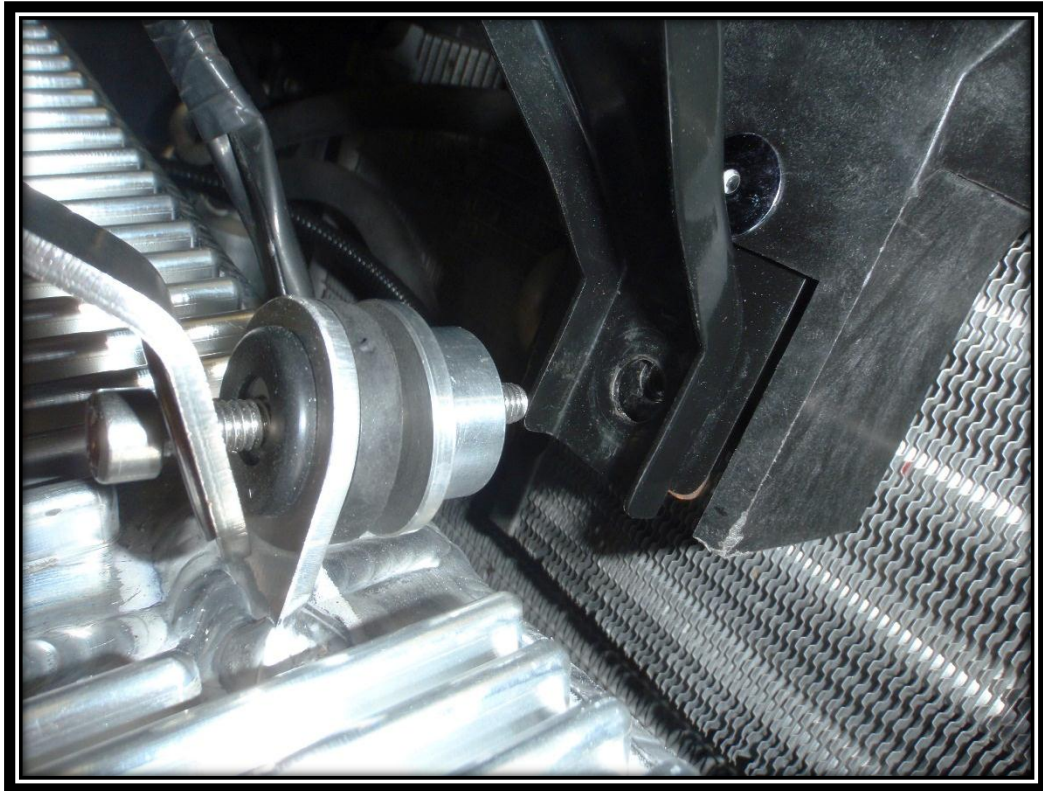
6. Fit the rubber grommet and small aluminium insert supplied into the top bracket of the intercooler.



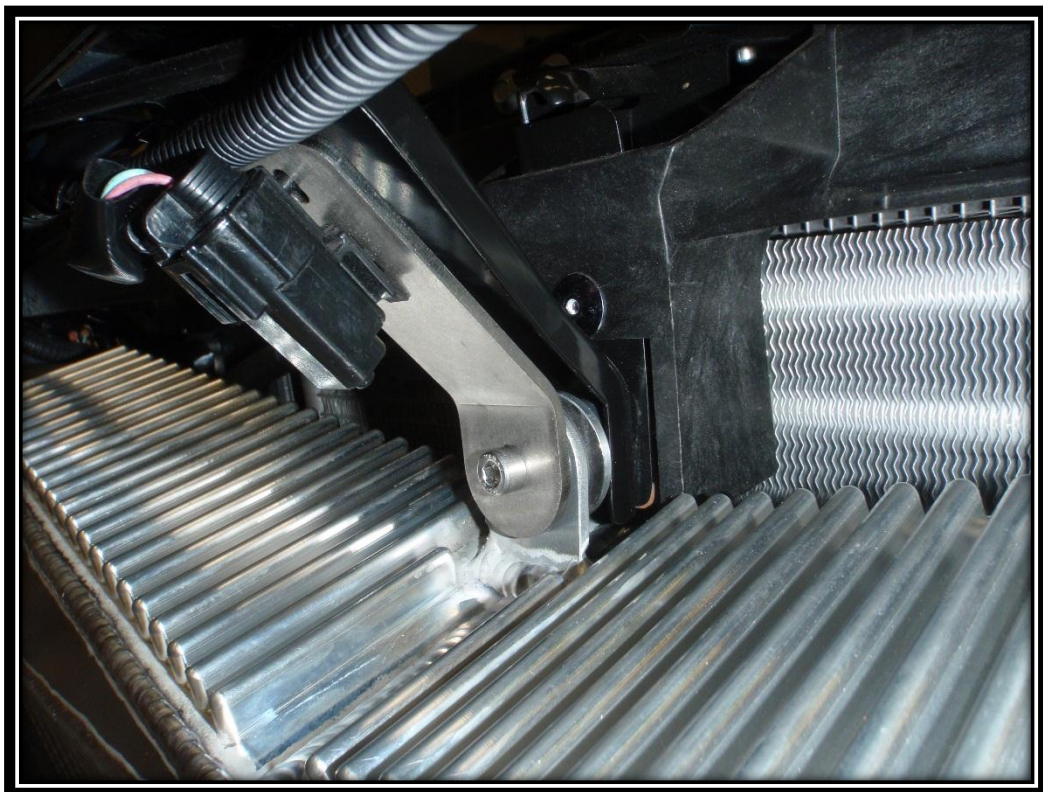
7. Lift the intercooler into position reusing the stock intercooler bolts, fit the large washers supplied in the kit and bolt loosely at the bottom.



8. Holding the intercooler in position place the long M6 bolt supplied through the air temperature sensor bracket, through the rubber grommet and aluminium top hat spacer.



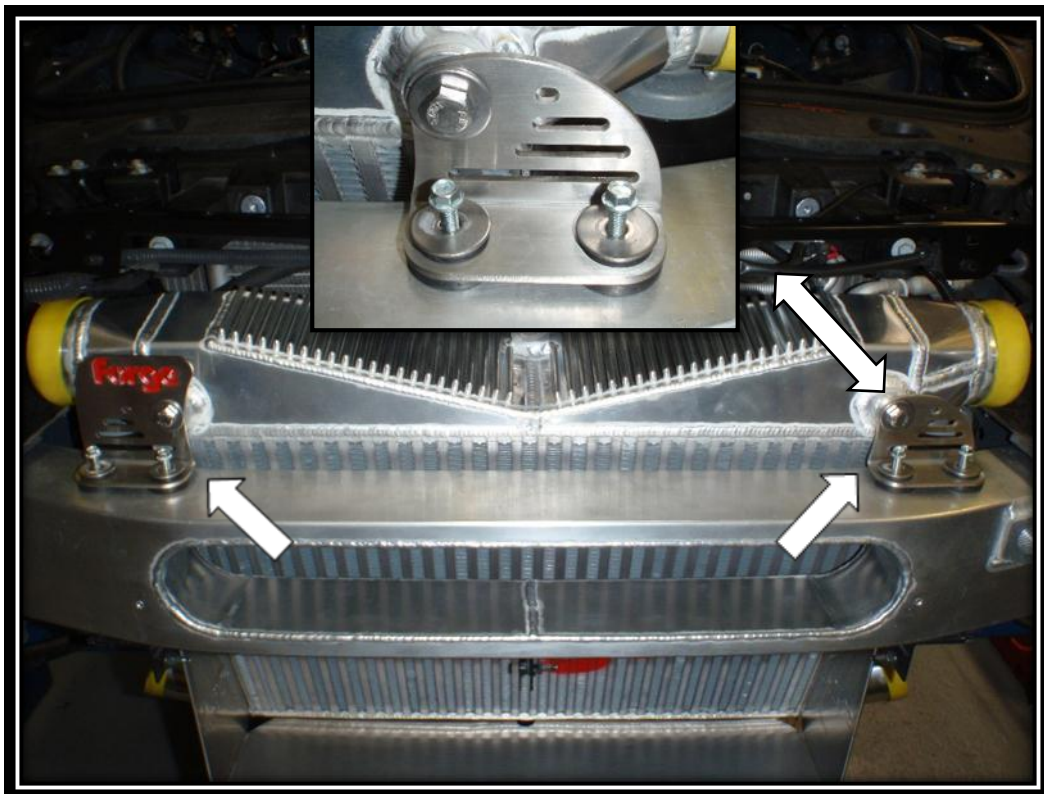
9. New position of air temperature sensor.



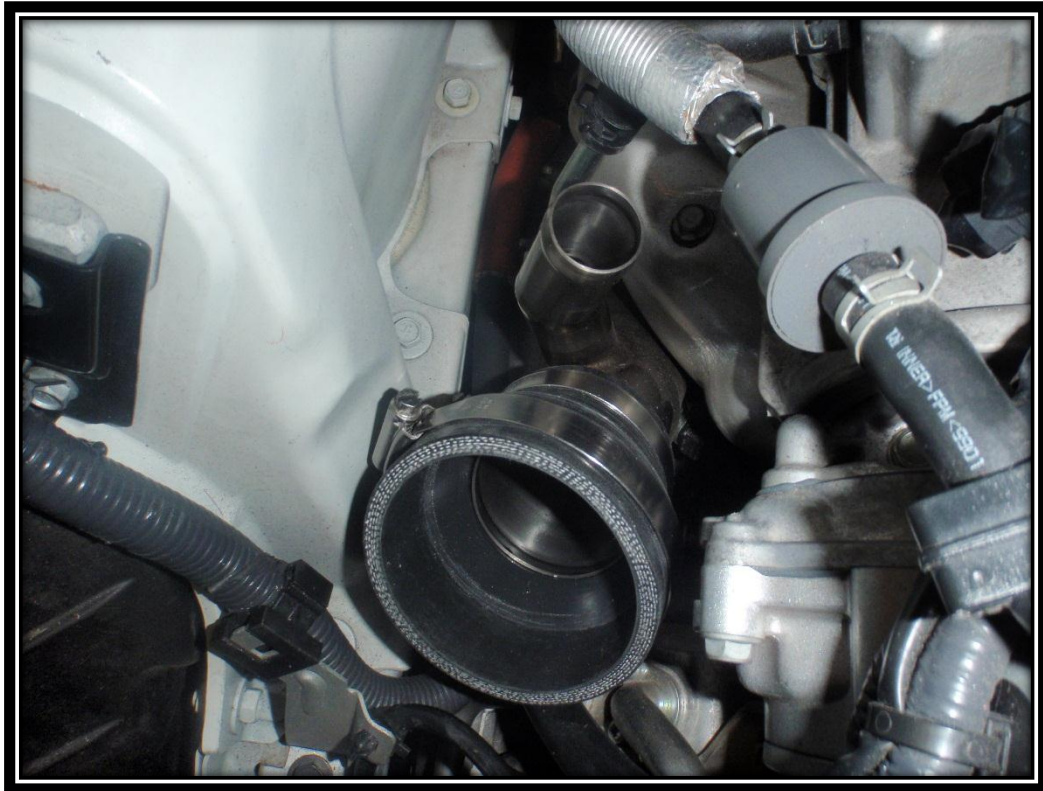
10. Fit the rubber grommets and small aluminium inserts into the brackets.



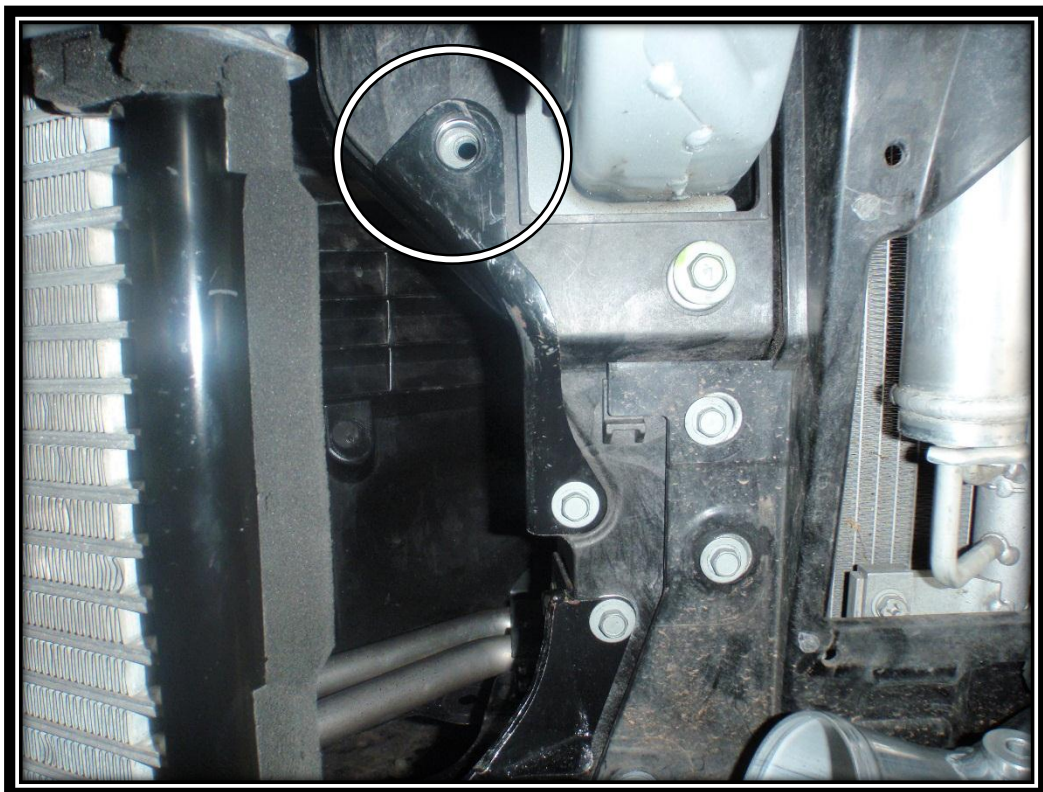
11. Refit the crash bar, bolt the brackets to the intercooler then attach the brackets to the crash bar using the self-tapping screws and large washers supplied with the kit. Please note the crash is an optional extra.



12. Fit the silicon hoses to the intake pipes and tighten, leave the other jubilee loosely fitted around the silicon until the induction pipes have been installed.



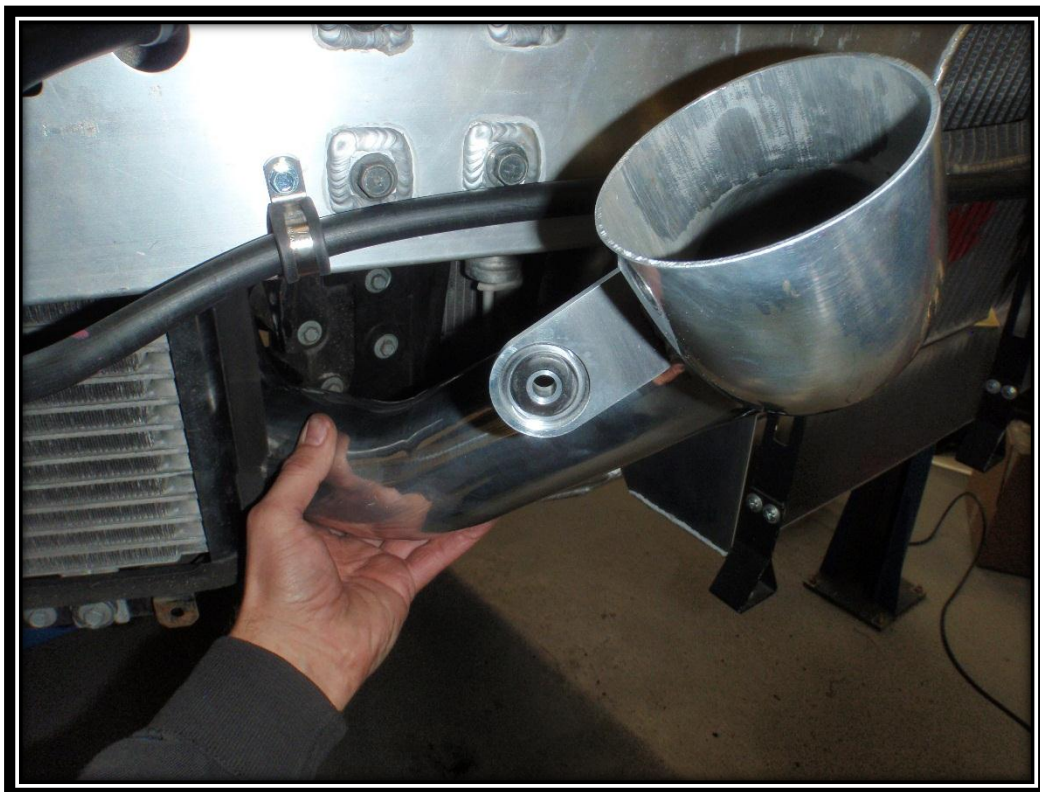
13. Remove the M8 bolt as shown below on both sides.



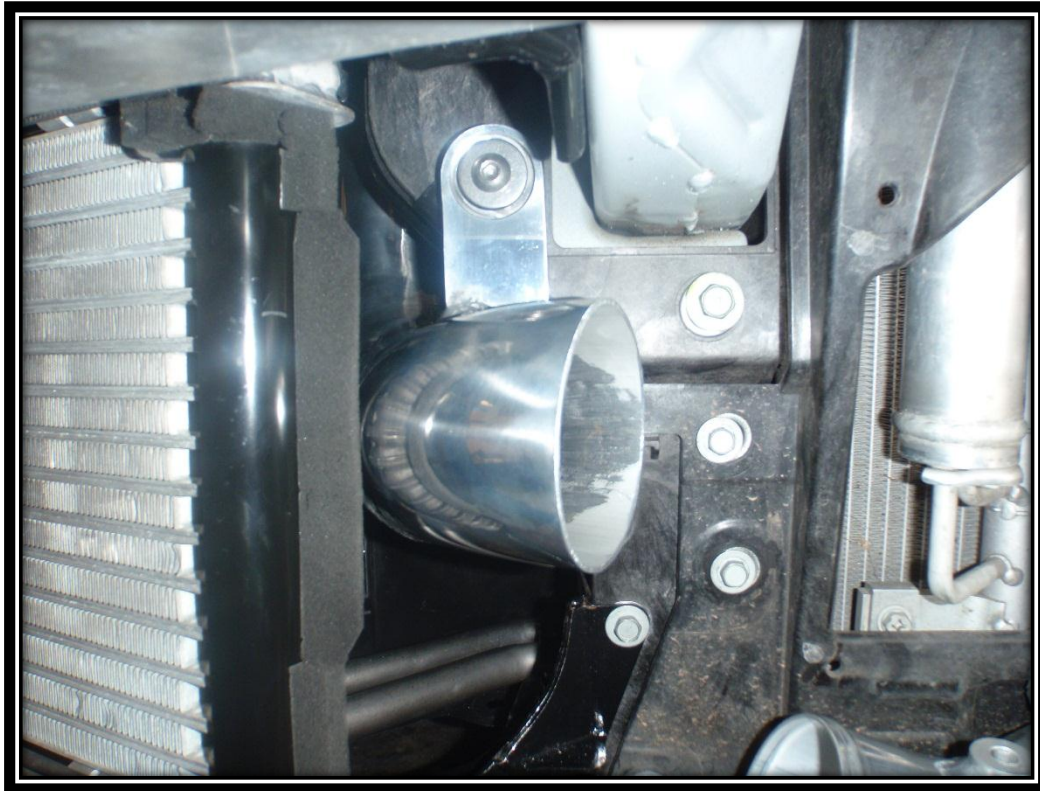
14. Fit the rubber grommets and stainless steel top hat spacers to the inlet pipes.



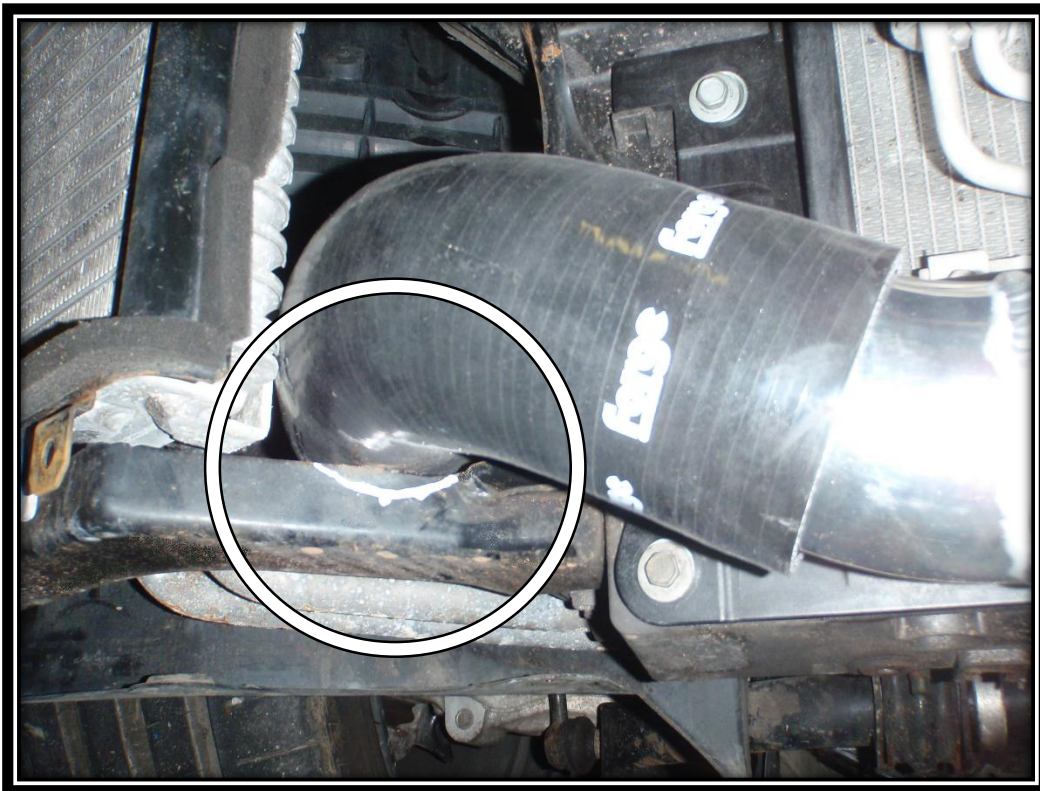
15. Insert the new intake pipes under the crash bar where the stock boost pipes would normally go.



16. Bolt in the induction pipes with the long M8 button head bolts and large washers, and tighten the silicon hose onto the inlet pipe in the engine bay.

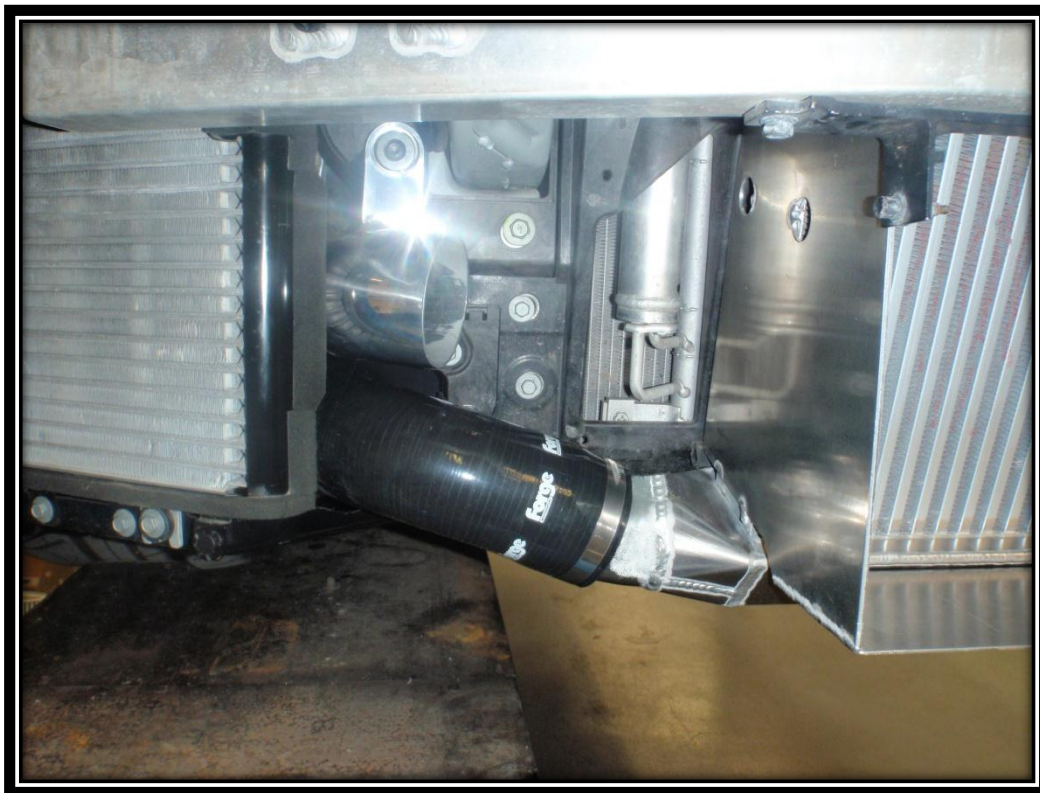


17. Loosely fit the silicon hose to the turbo on the oil cooler side, you will notice it fits up against the oil cooler bracket mark around the silicon hose and grind the bracket away for clearance.

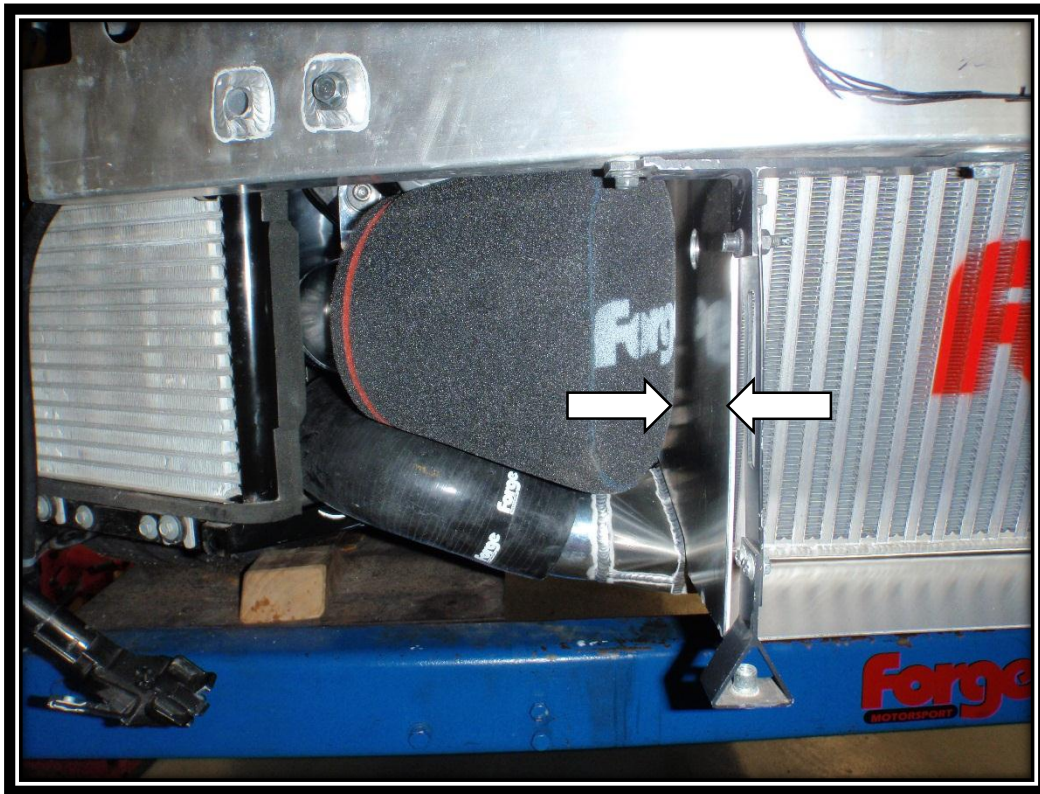




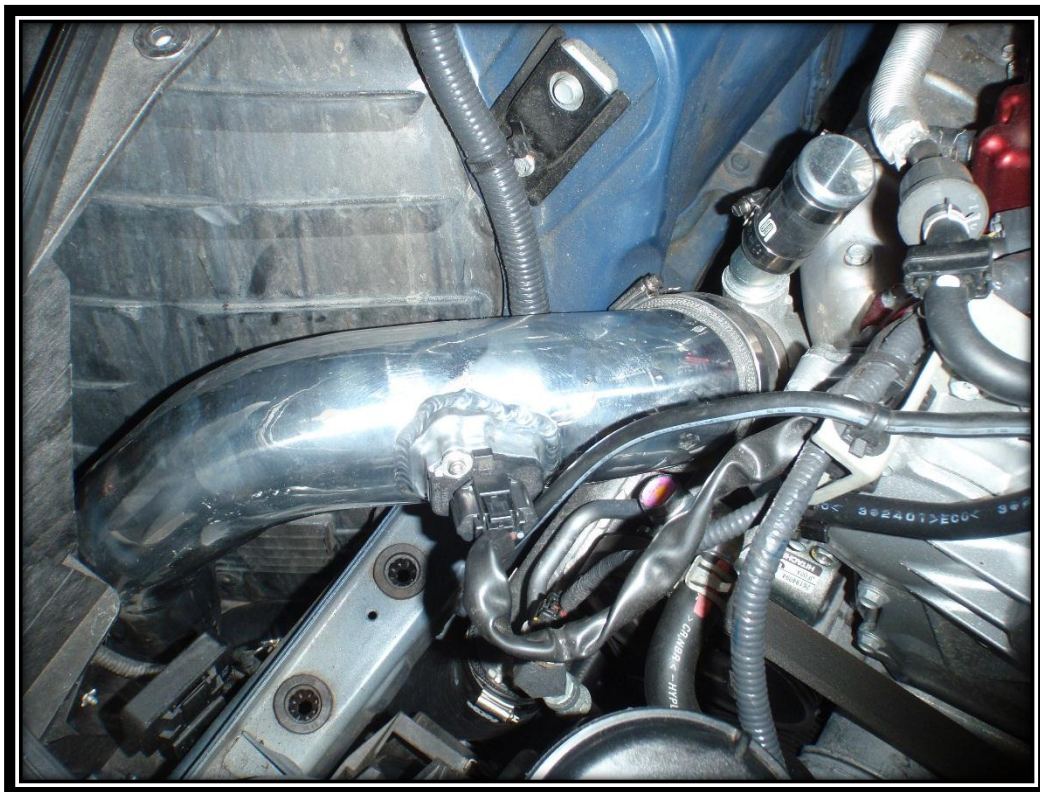
18. Now install the lower silicon boost hoses and tighten making sure there is enough clearance between the silicon hose and the bracket.



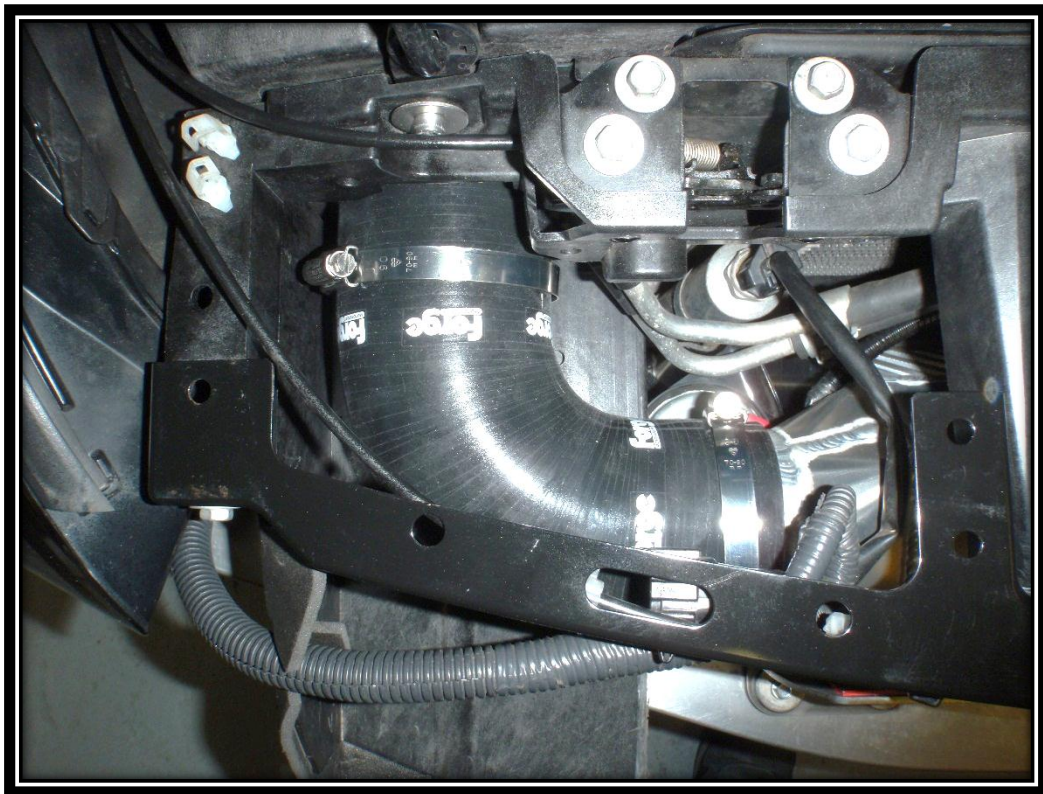
19. Install the filters so there is approximately a 10mm gap between the filter and intercooler.



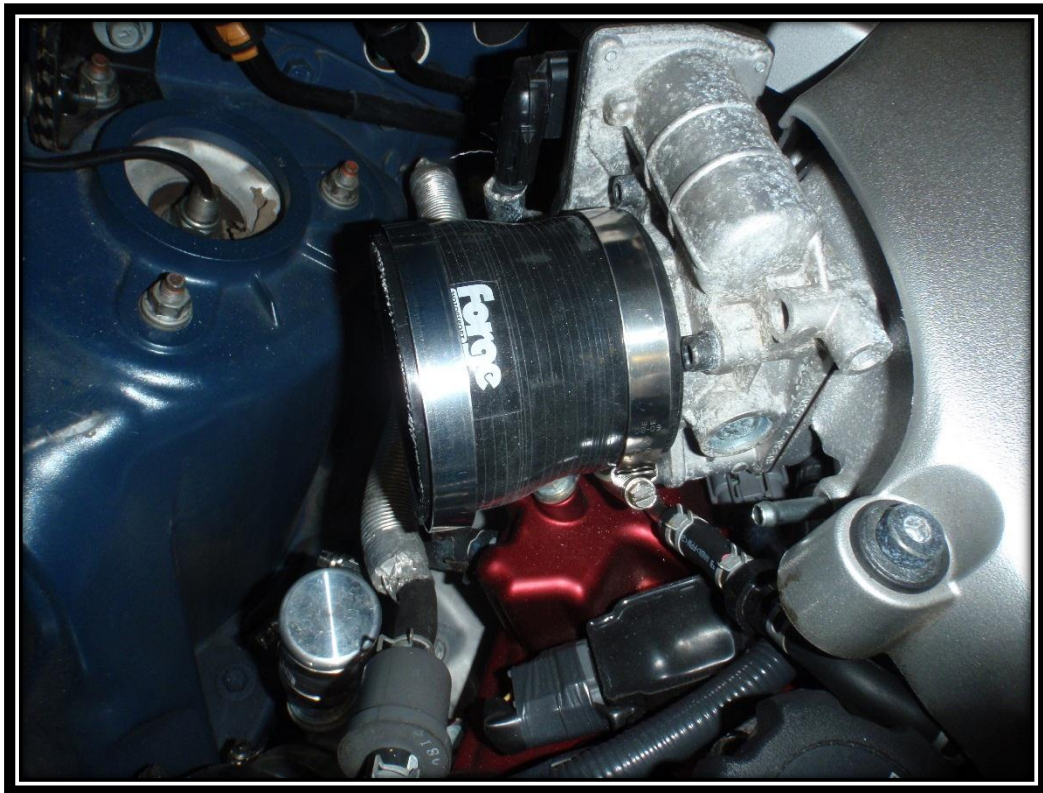
20. Refit the MAF sensors with screws supplied in the kit.



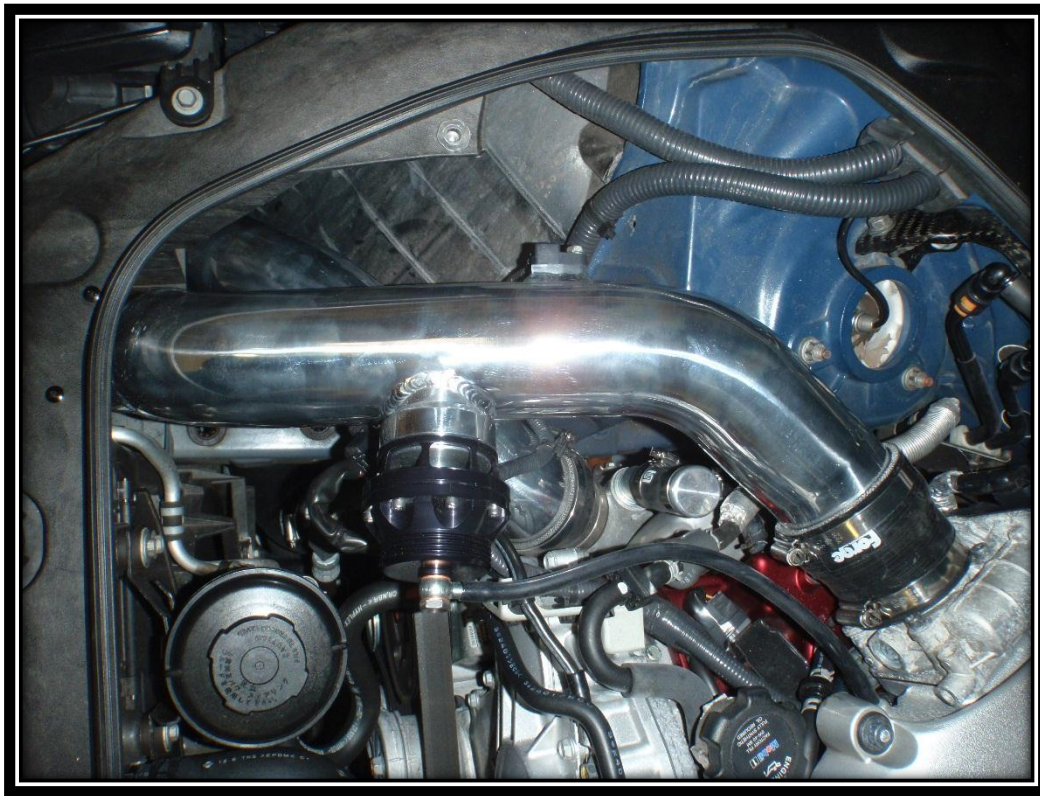
21. Install the silicon hoses to the top of the intercooler loosely with the clips in the position as shown below.



22. Install the silicon hoses to the throttle bodies loosely with the clips in the position as shown below.



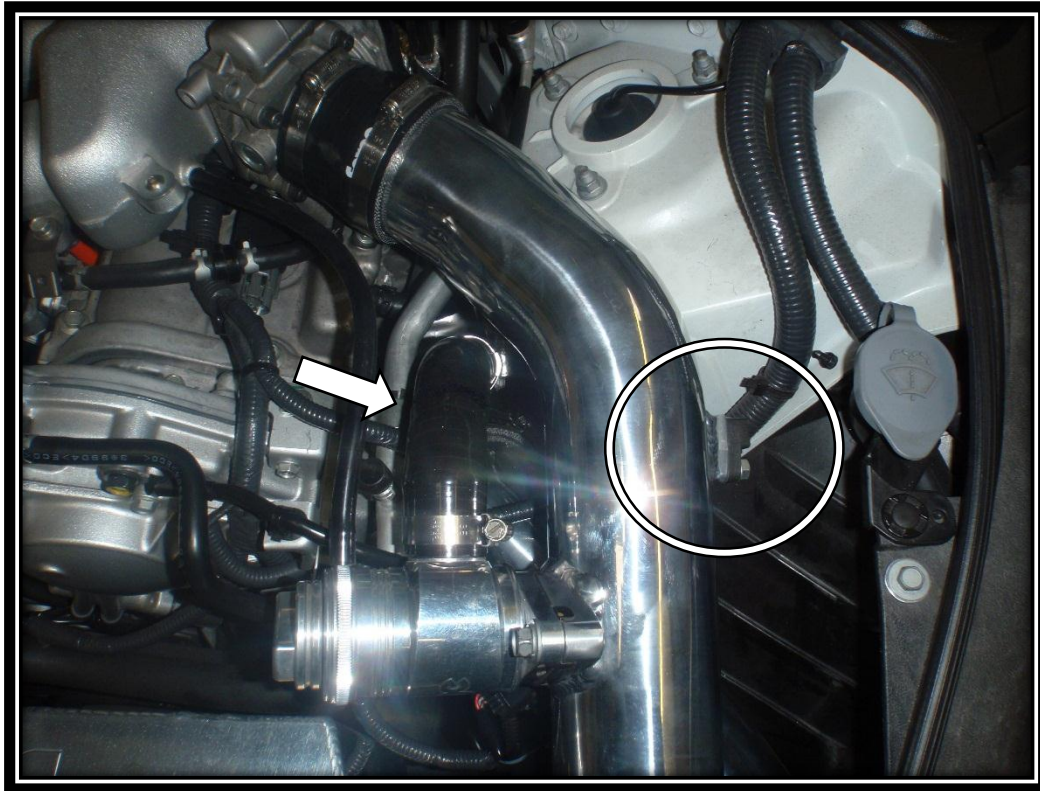
23. Install the dump valves onto the top boost pipes so they can be positioned correctly when the boost pipes are fitted. Fit the boost pipe into the intercooler silicon hoses, push into the silicon hose as far as possible then rotate and push into the throttle body.



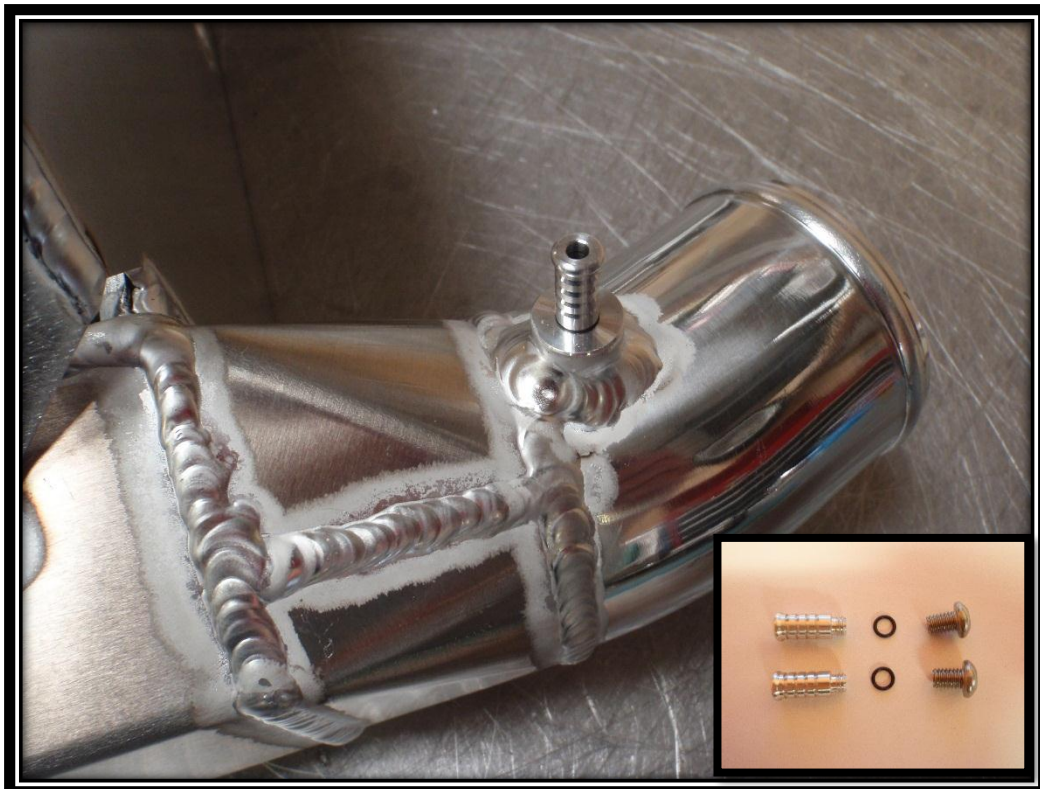
24. Make sure the dump valves are level and down far enough to clear the bonnet and tighten jubilee clips.



25. Refit the MAP sensors and attach the recirculating silicon hoses or if you are using atmospheric valves attach the blanking silicon hose.



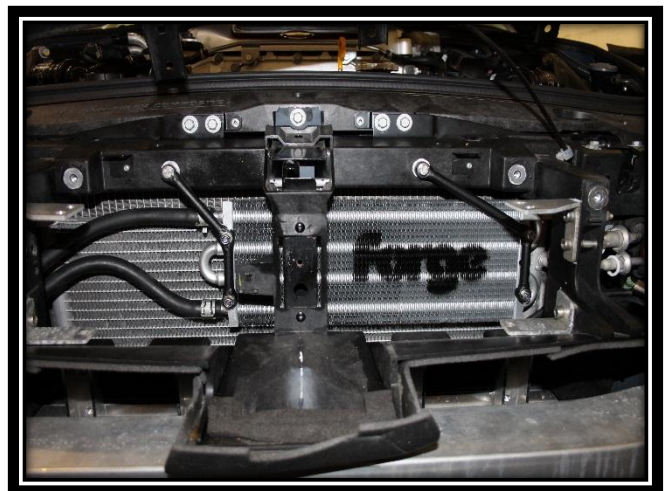
26. The inlets of the intercooler have bosses for installing Forge Motorsports IPCV and valves. However they could be used for boost readings etc. or just blank the off using the short button head bolts provided.

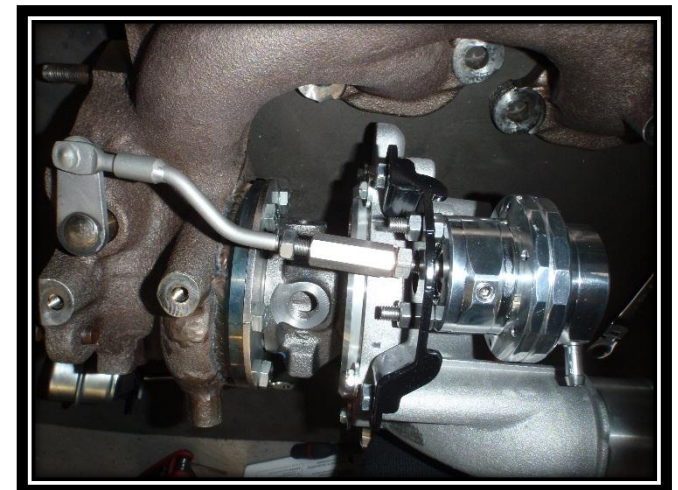
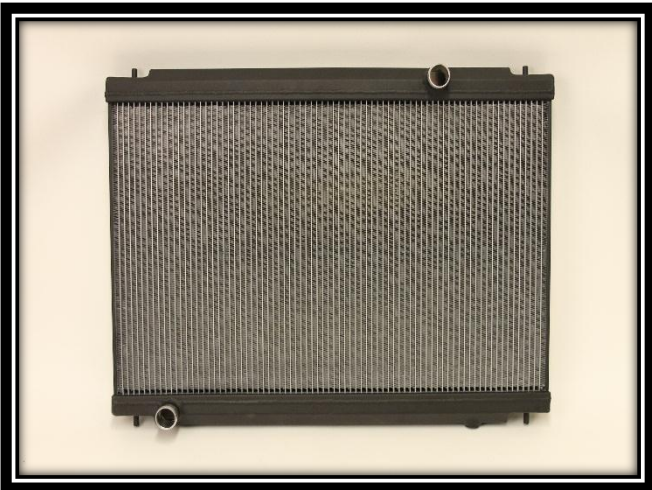
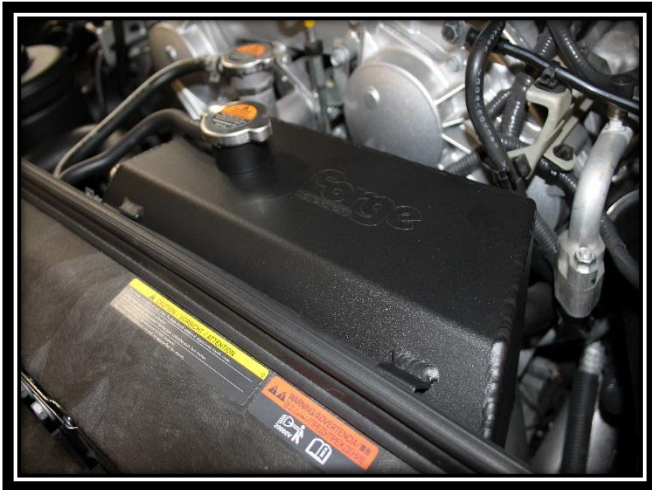


27. Refit bumper and all other parts and your installation is complete.



For many more Nissan GTR R35 products including the carbon fibre cold air intercooler ducting, PAS cooler, extra capacity header tank, dump valves, 25% larger radiator and actuators. Please contact your nearest Forge Motorsport distributor for our other products or visit our website www.forgemotorsport.co.uk and www.forgemotorsport.com





ENGINEERED FOR PERFORMANCE

