



MINI F56 COOPER S 2.0T INDUCTION KIT

INSTALLATION INSTRUCTIONS



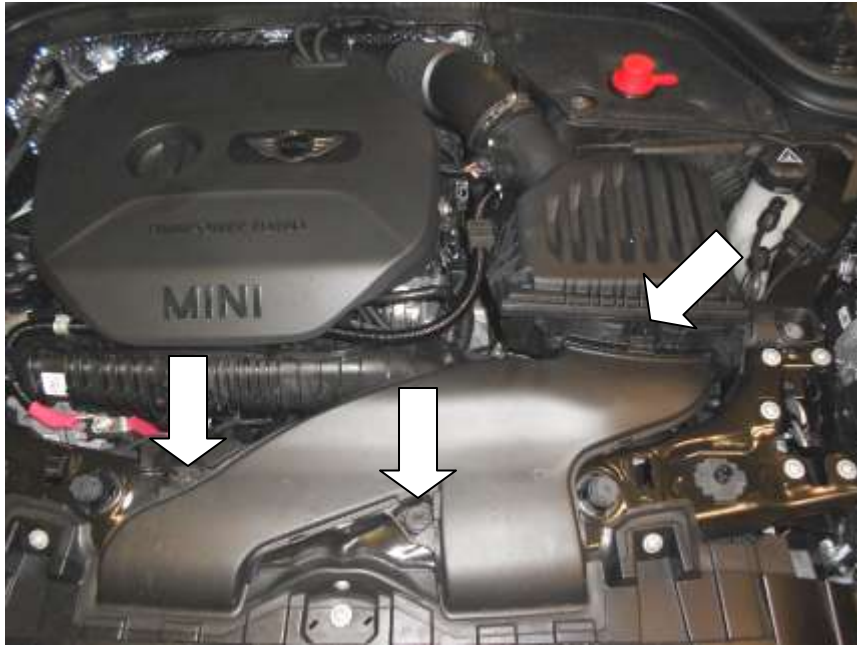
Please thoroughly read through and familiarize yourself with these instructions in their entirety prior to beginning any part of the installation process of any component. Please also ensure the vehicle and engine has cooled down sufficiently to avoid risking possible skin burns or other injury.

Tools Required:

- 10mm socket, extension bar and suitable ratchet.
- 7mm Hose clamp driver or flat blade screwdriver.
- 2mm, 5mm Allen key.
- T20 Torx driver.

Engineered for performance

1. Allow your vehicle to cool down fully before starting the installation. Open and secure the bonnet.
2. Using a 10mm socket, extension bar and suitable ratchet undo the 2x nuts. Unclip the intake duct where it meets the airbox and remove it from the vehicle.



3. Carefully disconnect the wiring to the sensor on the intake.



Engineered for performance

- Using a 7mm Hose clamp driver or flat blade screwdriver undo the hose clamp.



- Using a 10mm socket, extension bar and suitable ratchet undo the bolt on the airbox bracket.



Engineered for performance

6. Pull the intake pipe off of airbox pipework and firmly pull the airbox upward to release it.

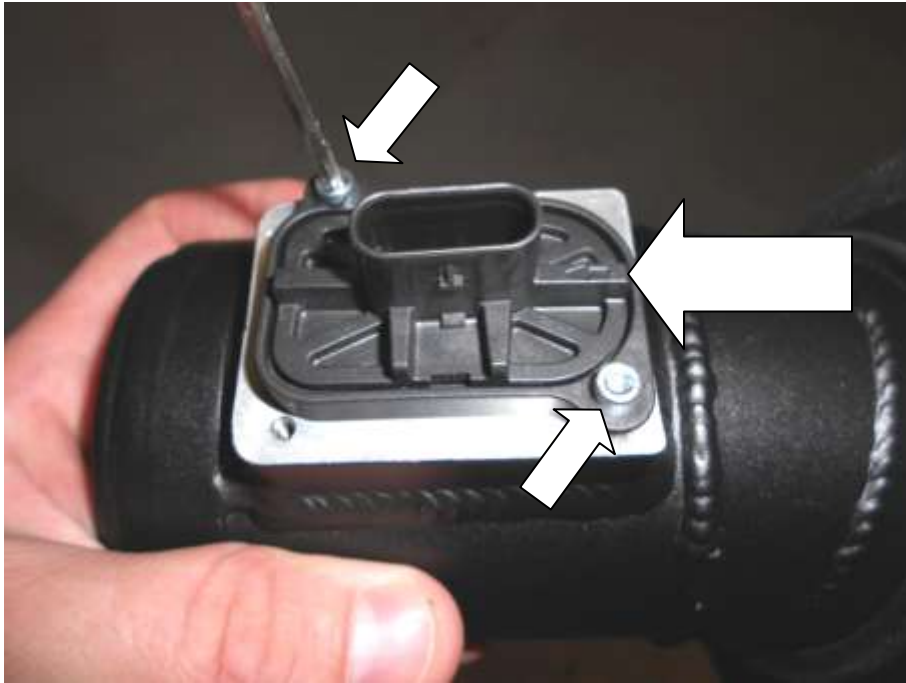


7. Using a T20 Torx driver undo the 2x screws and carefully remove the MAF sensor. Handle with care.



Engineered for performance

8. Fit the MAF sensor to your Forge Alloy induction pipe and secure using the 2x M3x12mm Allen cap bolts. The Arrow on the sensor pointing towards the engine.

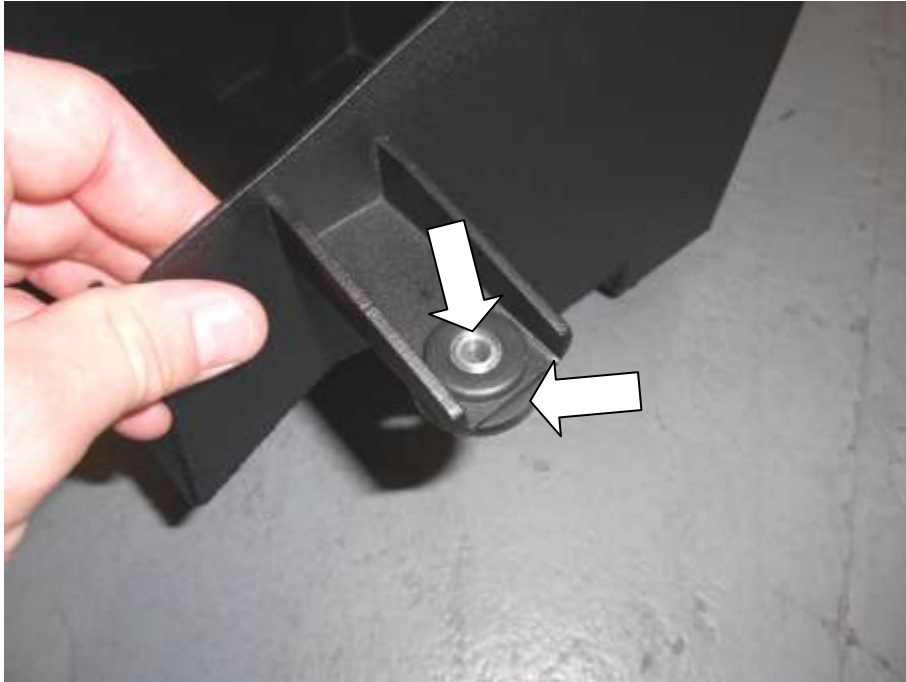


9. Fit the PiperCross airfilter to the Forge induction pipe and secure with hose clamp supplied.



Engineered for performance

10. Fit the anti-vibration grommet and dowel to the airfilter tray.

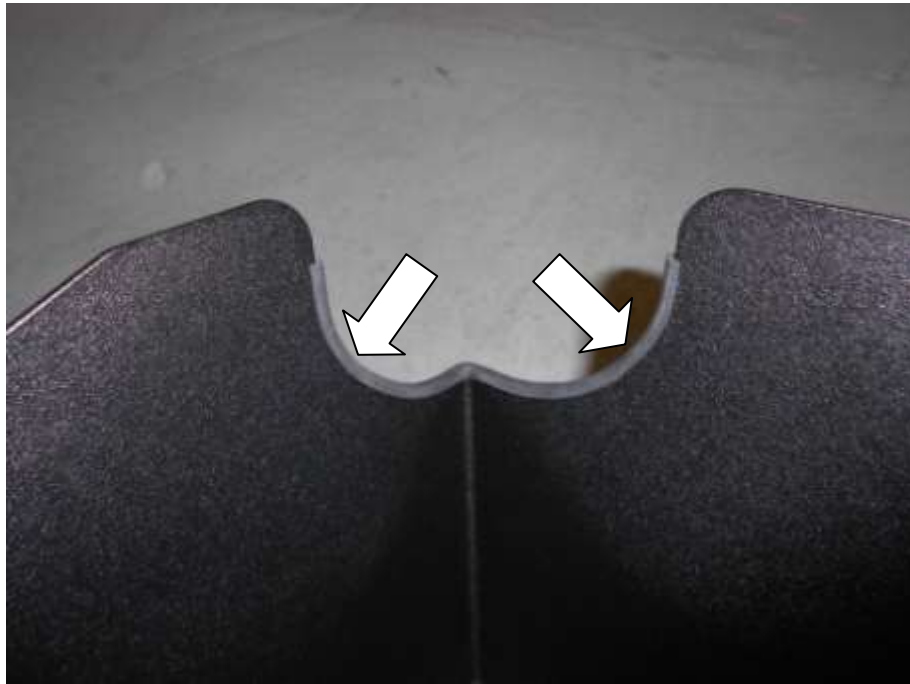


11. Carefully fit the airfilter tray in position and secure with the M6x20mm Allen bolt and 6mm penny washer.



Engineered for performance

12. Fit the rubber trim provided to the airfilter tray.



13. Fit the Forge induction pipe to the open end of the intake pipework. Rotate the alloy pipe until it sits in the correct position.



Engineered for performance

14. Using a 7mm hose clamp driver tighten the hose clamp.

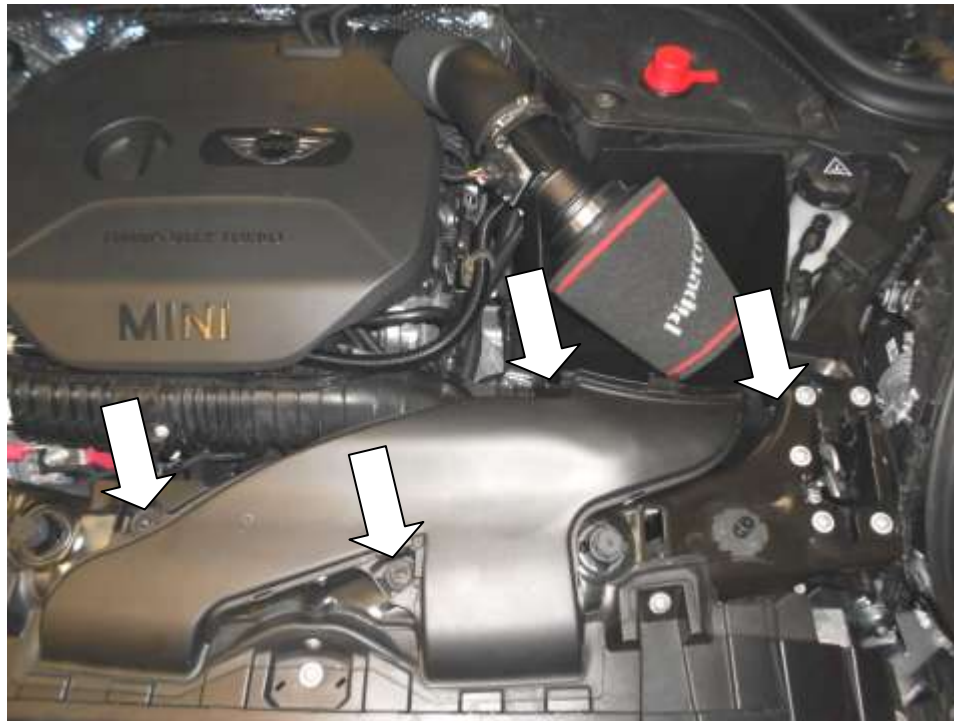


15. Reconnect the wiring to the MAF sensor.



Engineered for performance

16. Refit the OEM ducting, using a 10mm socket secure with 2x nuts.



17. Your installation should now be complete. Enjoy Your New Performance!

Check out WWW.FORGEMOTORSPORT.CO.UK and WWW.FORGEMOTORSPORT.COM

For a full range of performance products for your vehicle.

As always, with any questions or concerns about this product or anything else, please feel free to contact your local or preferred Forge Motorsport Dealer/ Installer, or you may contact us directly.

Forge Motorsport UK – (+44)1 452 380 999 / info@forgemotorsport.co.uk

Forge Motorsport US – (407)-447-5363 / sales@forgemotorsport.com



Engineered for performance